



OFFICE OF INTERCULTURAL STUDENT ENGAGEMENT
OFFICE OF INTERNATIONAL STUDENT SERVICES

2013-2014 ANNUAL REPORT

Dedication

This annual report is dedicated to former RISD professor and diversity champion, Arnold Prince.

Prince was an instrumental member of the RISD community who held an unwavering commitment to achieving representational diversity among RISD's faculty, staff, and students. An assistant professor in the Sculpture department from 1972–80, Arnold Prince was best known for his large-scale carvings in wood and stone and for his internationally distributed textbook *Carving Wood and Stone: An Illustrated Manual* (Prentice Hall, 1981). A renowned sculptor whose work is in numerous public and private collections, Prince immigrated to New York City in the 1950s from the island of Saint Kitts in the British West Indies, studied sculpture at the Art Students League of New York and began his teaching career at a Harlem High School.



Although his tenure at RISD was short, his impact was lasting. Prince went on to teach at North Adams State College in Massachusetts and earned a Lifetime Achievement Award from the University of Rhode Island (URI) in 2000. His bronze sculpture of Civil Rights leader Arthur Hardge is on permanent display in front of URI's Multicultural Building.



TABLE OF CONTENTS



MISSION & VISION	7
HISTORY TIMELINE	9
PROFESSIONAL STAFF	12
STUDENT STAFF	16
SERVICE & OUTREACH	20
PROGRAM LIST	23
PARTNERS LIST	24
CREDITS	25





MISSION & VISION

"RISD is committed to a multi-culturally and philosophically diverse environment that is respectful of all the members of its community: students, faculty, curators and staff"

-RISD Mission Statement

The Office of Intercultural Student Engagement

The Office of Intercultural Student Engagement (ISE) promotes cultural awareness, dialogue, and interaction while serving as a hands-on resource for specific RISD communities. Primary target communities include: students of color, international students, students identifying within the Lesbian, Gay, Bisexual, Transgender, Questioning (LGBTQ) spectrum, religious and/or spiritual students; and those dedicated to inclusive community.

This Office provides leadership in the areas of student success, retention programs, campus education and immigration compliance. It also works closely with RISD's faculty, staff, and administrators. As a resource, it advises students on social, cultural, personal matters, financial aid issues, and academic procedures. Student and leadership development through supporting and advising student cultural group is encouraged and assisted. Included in the ISE office is the Office of International Student Services, which specifically addresses international student success and immigration.

The Office of International Student Services

The Office of International Student Services (OISS) provides services for international students, including immigration guidance and compliance, international student orientation, cross-cultural transition support and programming, and academic success.

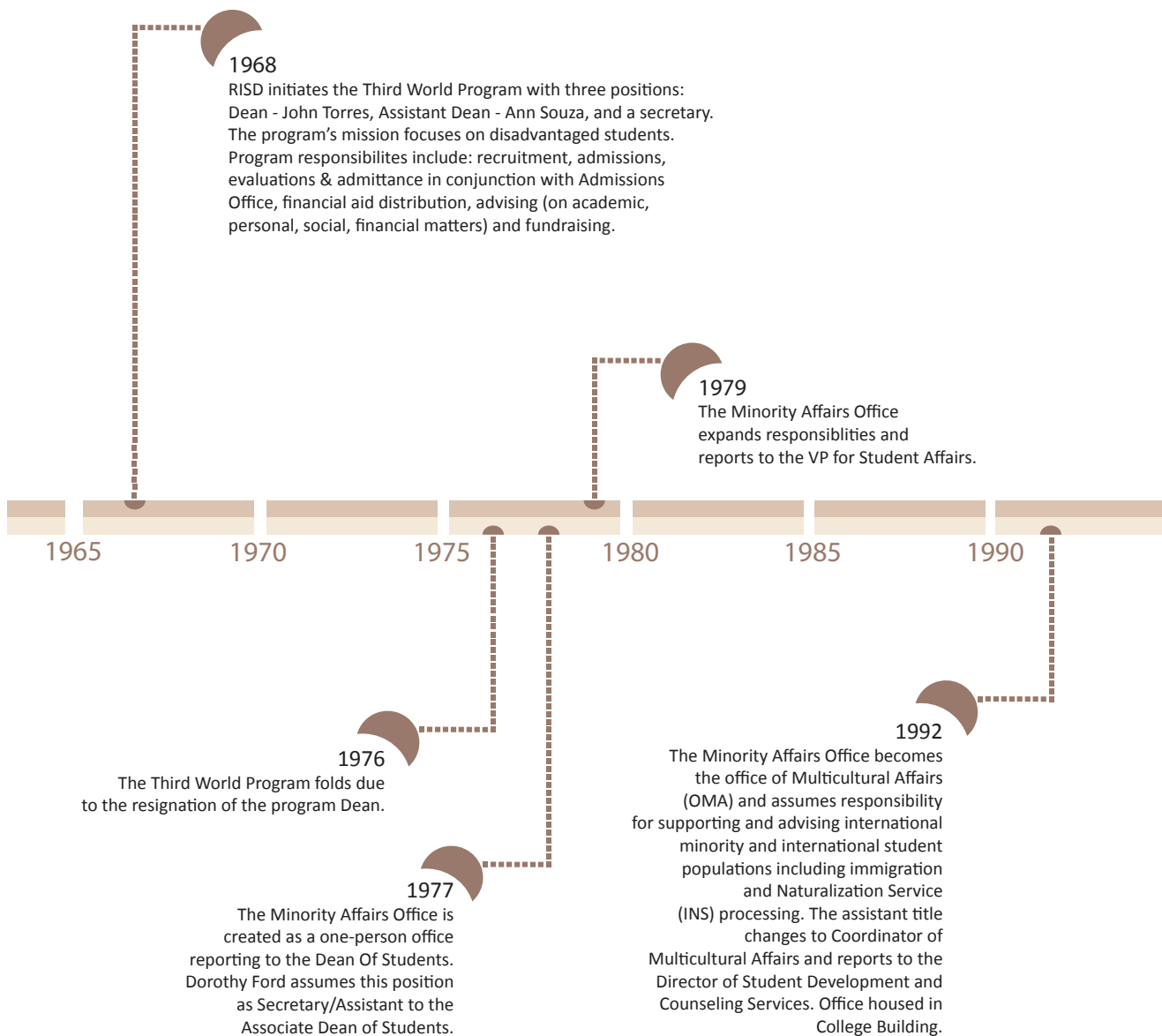
OISS serves as an advocate for international students, advising them on the wide variety of experiences they may encounter during their studies in the United States. Such experiences include: social, cultural, financial, academic, immigration and personal matters. The office supports international students and their success at RISD.

"The Third World Program is a concept that was initiated during the tumultuous 1960s as with most ethnic oriented programs across the country. The few third world students at RISD during that time saw the need to develop a viable program that would not only help finance the education of future third world students, of African, Asian and South American ancestry, but provide the necessary counseling service, both academic and personal, that was also lacking. RISD has understood the need for such a program and has aided its development along with federal assistance."

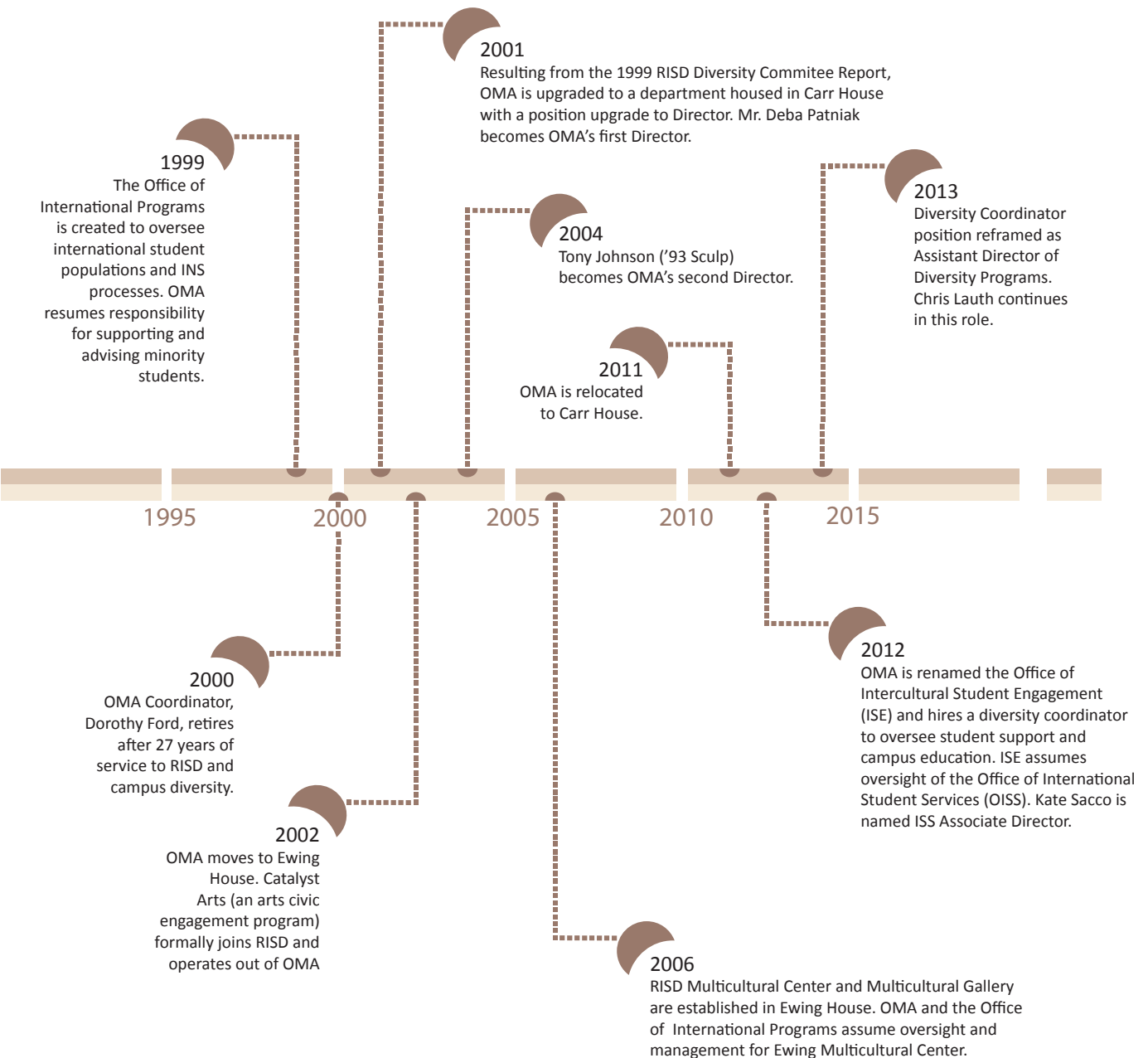
John Torres, Director, Third World Program 1968-73

Narrative Summary

While currently named The Office of Intercultural Student Engagement (ISE), RISD's first department dedicated to assuring access, support and other assistance to minority students was established in 1968 as the Third World Program. While the office has adjusted its name over the years, its mission and contribution have remained the same. Helping RISD achieve its goal of attracting and developing the most promising artists and designers is the core of this office's work. Its specific historical charge of assisting students of color and international students has served to provide a more inclusive environment for these students. It has equally enhanced the educational and social experiences of the RISD commonwealth. Since the 1960's, five administrators have led the office with titles ranging from Dean, to Coordinator, to Director. ISE is grateful for the dedication, commitment, and contributions of these administrators, as they have championed, advocated for, and supported the needs of our various student populations. Their service helped guide the college toward realizing an inclusive and supportive environment where all can contribute to, and benefit from, the uniqueness of RISD.



TIMELINE



EXECUTIVE STAFF



Tony Johnson

Director,
Office of Intercultural Student Engagement (ISE)

Tony Johnson is the Director of Intercultural Student Engagement at Rhode Island School of Design. In this role, he participates in constructing and implementing the college's efforts toward a multicultural and philosophically diverse environment that is respectful of all its members; Tony works to ensure a college campus that is enriched through experiencing and understanding society through strategic use of the range of cultures the college represents and building strong bridges to Rhode Island's greater community.

Tony is a 1993 RISD sculpture alumnus. Prior to his current role, he held a variety of positions including co-founding an arts consultant business, conducting art design and professional development training for MetLife Insurance, and serving as RISD's first admissions officer dedicated to diversity enrollment.

In addition to his work with art institutions, he is a former board member of the Rhode Island Black Heritage Society, a juror on The Rhode Island Foundation's First Generation Scholarship Committee, and a member of the Multicultural Affairs Think Tank through the New England Resource Center for Higher Education (UMass/Boston).



Chris Lauth

Assistant Director of Diversity Programs,
Office of Intercultural Student Engagement (ISE)

Christopher Lauth is the Assistant Director of Diversity Programs for the Office of Intercultural Student Engagement (ISE). In this role, he seeks to facilitate student success by providing support and outreach to RISD community members. An integral part of facilitating this success is working to provide a supportive, safe, welcoming and affirming environment of equal treatment and access for various communities including: lesbian, gay, bisexual, transgender and questioning (LGBTQ); racial/ethnic minority; religious and first-to-college. Through support, advocacy and educational opportunities, Chris seeks to increase the college's awareness, understanding and competency among important multi-cultural issues. Chris received his Bachelor's Degree from Flagler College (2009) in U.S. Southern Cultural History and his Master's from Canisius College (2012) in College Student Personnel Administration. Prior to his current role, he served as the LGBTQ Leadership Development Coordinator at Canisius College as well as the Founder and Executive Director of Club UNITY, Flagler College's Gay/Straight Alliance from 2007-2009.



Max Avi Kaplan
Administrative Coordinator,
Office of Intercultural Student Engagement

Max Avi Kaplan is the Administrative Coordinator of Intercultural Student Engagement (ISE) at the Rhode Island School of Design. He holds a Bachelor's degree in Individualized Study with a concentration in Material Culture Studies and Costume History from New York University's Gallatin School of Individualized Study. In 2013, Max completed a Master's degree in Visual Culture: Costume Studies from New York University's Steinhardt School of Education.

Max serves as a key resource for diversity-related student issues on campus and to students and staff seeking resources related to cultural diversity. As the liaison between the campus community and the Office of Intercultural Student Engagement, he works to connect students, specifically those of diverse backgrounds, to important resources within the school. As the administrative coordinator, Max is responsible for various administrative functions including supervision of student workers, organizing programming and executing budgetary, communication and bureaucratic processes. Max grew up in New Jersey and lived in San Francisco and New York before moving to Providence. Prior to his current role, Max worked as the Assistant to the Dean of Students at NYU's Gallatin School of Individualized Study and as a set designer and stylist for the window displays at Bergdorf Goodman.



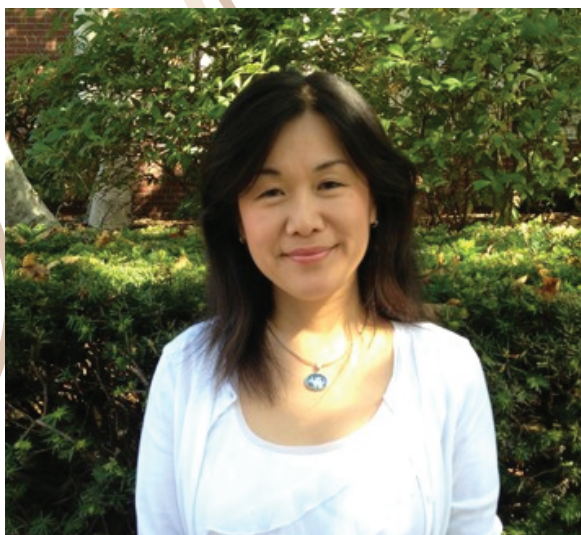
Kate Sacco

Associate Director,
Office of International Student Services (OISS)

Kate is the Associate Director of the Office of International Student Services (OISS) within the Office of Intercultural Student Engagement at the Rhode Island School of Design. She holds a Bachelor's degree in Spanish from the University of Wisconsin-Eau Claire and a Master's degree in Intercultural Relations from Lesley University.

Kate's role in OISS is to assist the international student population with cultural adjustment and immigration compliance. Along with the director, she also promotes positive cultural exchange experiences by creating opportunities for international students and domestic students to share their knowledge, language, culture and background within the United States, and the RISD community.

She is from Wisconsin, she has lived, worked and traveled in a range of places, including: Massachusetts, Oregon, Rhode Island, Australia, China, Serbia and Mexico. Most of her work has been in the field of Intercultural Relations and she is involved in NAFSA. Prior to her current role, she has worked at the Council on International Educational Exchange (CIEE) and ELS Language Centers.



Mika Kanazawa

International Student Advisor,
Office of International Student Services
Office of Intercultural Student Engagement

Mika Kanazawa is the International Student Advisor of the Office of International Student Services (OISS) within the Office of Intercultural Student Engagement (ISE). She holds a Bachelor's degree in Human Services from Lyndon State College and a Master's degree in Intercultural Relations from Lesley University.

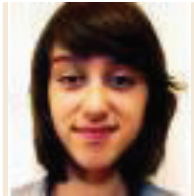
Mika's role in OISS is to assist the international student population with cultural adjustment and immigration compliance with the Associate Director. As part of ISE team, she also promotes positive cultural exchange experiences by creating opportunities for international students and domestic students to share their knowledge, language, culture and background within the United States, within Providence and within the RISD community.

Mika is originally from Kobe, Japan. She lived in Vermont and Massachusetts before she moved in Providence. Prior to her current role, Mika worked in the Media Lab and the International Scholars Office at the Massachusetts Institute of Technology and Emerson College.

STUDENT STAFF

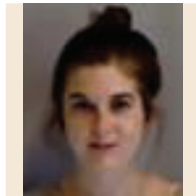
Julia Wright

ISE Project Assistant



Samantha Tesluk

ISE Project Assistant



Daniel Kim

ISE Project Assistant: Website



Shao-yi Dodo Chiang

ISE Project Assistant: Website



Sruthi Kainady

ISE Project Assistant: Statistics



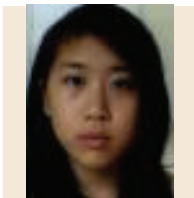
Ogechukwu Mora

ISE Cultural Programmer



Crystal Pei

ISE Cultural Programmer



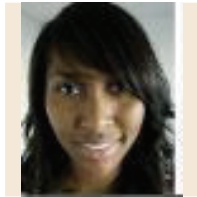


Shivantika Jain

ISE Cultural Programmer

Melanie Patterson

ISE Cultural Programmer



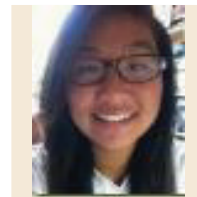
Sarah Wang

ISE Cultural Programmer



Emily Chao

ISE Cultural Programmer



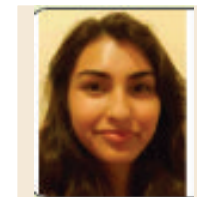
Maria Pizarro

ISE Cultural Programmer



Isabel Ramos

ISE Cultural Programmer



Ki Bbum Kai Lee

OISS Program Assistant



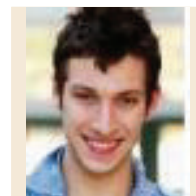


Richa Kejriwal

OISS Project Assistant

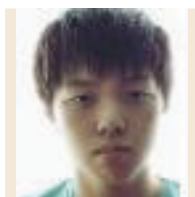
Adam Blake

OISS Program Assistant



Yeon Hak Ryoo

OISS Program Assistant



Jae Hee Han

OISS Program Assistant



Elisabeth Zhang

OISS Program Assistant



Marina Aldarondo

OISS Program Assistant



Tara Sriram

OISS Program Assistant





Aigerim Tumenbay

OISS Program Assistant

Kyu Li Kim

OISS Program Assistant



Irin Chitman

OISS Program Assistant



Mariam Quraishi

OISS Cultural Ambassadors



Sang Eun Dawn Lee

OISS Cultural Ambassadors



Denise Lee

OISS Cultural Ambassadors



Fung Yu Rachel Leung

OISS Cultural Ambassadors



Julian Uribe

OISS Grad Assistant



SERVICE & OUTREACH

Office of Intercultural Student Engagement (ISE)

Conferences attended:

American College Personnel Association (ACPA)
Creating Change: The National Conference on LGBTQ Equality
Cornucopia of RI's 2014 Conference, More than Slavery: African Americans in RI from 1650-present.
Association of Title IX Administrators (ATIXA) Title IX Investigator Training
National Association of Student Personnel Administrators (NASPA) 2013 Multicultural Institute. Dec 4-7. Las Vegas, NV
2014 International Education Training Services. July 17-18; August 14-15. NY, NY
2014 Elia Baker Child Policy Training Institute: Children's Defense Fund Freedom Schools. June 1-6. Knoxville, TN

Conference Calls & Other Professional Development

Campus Gender Inclusive Initiatives
Status of HIV in the Black Community
Experience of Being Muslim & Lesbian in the South
PrEP HIV Education & Prevention
NASPA Webinar: Beyond Binaries: Supporting Bisexual, Pansexual, Fluid, and Queer (BPFQ) Identified Students
Dr. Jing Lin Webinar: Education for Global Peace
RISD Learns Course: Preparing for Management Program through RI Higher Education Training Consortium (RIHETC)

Memberships/Affiliations

National Association of Student Personnel Administrators (NASPA)
2014 Patty & Melvin Alperin First Generation Scholarship Fund Committee (RI Foundation)
Sankofa Initiative - RISD partnership with Belafonte Enterprises Inc.
Multi-Cultural Administrators' Association (MCAA)
American College Personnel Association (ACPA)
Human Rights Campaign (HRC)
National Gay & Lesbian Taskforce
Consortium of Higher Education LGBT Resource Professionals
RISD Staff Council, Executive Board Secretary
AIDS Project Rhode Island
Youth Pride Rhode Island
RI Health Department
Center for Stengthening Youth Prevention Paradigms (SYPP Center)

SERVICE & OUTREACH

Office of Intercultural Student Engagement (ISE)

Service

Campus Master Plan Steering Committee
Student Affairs Programming Committee
Student Conduct Board
Orientation Programming Committee
Student Leadership Dinner Committee
RISD 2014 MLK Series Planning Committee
RISD Commencement Volunteer
RISD Diversity Steering Committee
RISD International Orientation Planning Committee
RISD Project Thrive - Mentor
RISD Search committee: Director of Residence Life
RISD Students of Concern Committee
RISDiversity Planning Committee
Student Club Advisor: Asian Cultural Association (ACA); Black Artists and Designers (BAAD)



SERVICE & OUTREACH

Office of International Student Services (OISS)



Conferences attended:

NAFSA: Association of International Educators: Region XI Conference, Stowe, VT-
October 20- October 24, 2013

Kate Sacco is a member of the Association of International Educators(NAFSA) and helped to organize the regional conference in Stowe, VT as Chair of Region XI. The conference focused on a variety of topics, such as: study abroad, cultural adjustment, immigration regulations and compliance and internationalization. It also includes sessions on policy implementation and enlisting best practices in the field of international education.

NAFSA Washington Leadership Meeting- January 24- January 26, 2014

Kate Sacco attended the Washington Leadership Meeting as the Past Chair of the NAFSA Region XI Team. The meeting was focused on leadership skills and how to utilize them within both NAFSA and within the field of International Education.

RISD Leadership Development Program, Providence, RI-
February 11, 2014 (full day)

March 4, 2014 (half day)

March 27, 2014 (half day)

April 17, 2014 (full day)

Kate Sacco was selected to attend RISD's Leadership Development Program during the Spring of 2014. The areas that were covered in the Program were: Acting Strategically and Innovatively, Building Trust and Fostering Cohesiveness, Creating an Inclusive Environment, and Developing Talent and Inspiring Great Performance.

Association for Orientation(NODA), Transition & Retention in Higher Education
Regional Conference, Nashua, NH- March 7 -9, 2014

Kate Sacco attended the regional conference in Nashua, NH. The conference focused on a variety of topics, such as: international orientation, programming, retention and leader training.

NAFSA National Conference, San Diego, CA- May 25- 30, 2014

Kate Sacco attended the conference focused on a variety of topics, such as: study abroad, cultural adjustment, immigration regulations and compliance and internationalization. It also includes sessions on policy implementation and enlisting best practices in the field of international education.



SERVICE & OUTREACH

Office of International Student Services (OISS)



IETS (International Education Training Services) Workshops, New York, NY-
July 17- 18, 2013

August 14- 15, 2013

November 20- 21, 2013

Mika Kanazawa attended the International Education Training Services (IETS) series on the F-1 Student Visa. The 2-day workshops were offered at three different times and focused on the following topics: How to create an I-20, working in SEVIS (Student & Exchange Visitor Information System), the F-1, reinstatements, maintaining student status, reduced course loads and employment authorizations.

NAFSA Region Conference, Stowe, VT- October 20- October 24, 2013

Mika Kanazawa is a member of Association of International Educators(NAFSA) and attended the regional conference in Stowe, VT. The conference focused on a variety of topics, such as: study abroad, cultural adjustment, immigration regulations and compliance and internationalization. It also included sessions on policy implementation and enlisting best practices in the field of international education.

Spring Immigration Workshop, Babson College- March 17, 2014

Mika Kanazawa attended the Spring Immigration Workshop that focused on immigration regulations and policies. It also included sessions on best practices in the field of international education.

Service & Outreach

RISD Conduct Committee

RISD Global Classroom Working Group

RISD Data Definitions Group

RISD Students of Concern Committee

RISD Orientation/International Orientation Committee

NAFSA: Association of International Educators- Past Chair of Region XI, Region XI Team

Member: International Educators of Rhode Island (IERI)

Member: NAFSA: Association of International Educators

Member: NODA: Association for Orientation, Transition & Retention in Higher Education

Member: Association of Independent Colleges of Art & Design (AICAD)

List of Recipients

Global Partners & Programs

Writing Center

Registrar's Office

Admissions

Career Center

Grad Studies



PROGRAM LIST


During the 2013-2014 academic year, 6703 individuals attended / participated in ISE and OISS educational and social programming. Below is a comprehensive listing of ISE programming. Some programs were collaboratively produced with other departments on campus.

Aug. 31	10:00a.m. - 05:00p.m.	Common Leader Training
Sept. 8	06:30p.m. - 08:30p.m.	Jamie Washington NSO keynote
Sept. 8	08:30p.m. - 09:00p.m.	Meet N' Greet with Jamie Washington
Sept. 9	05:30p.m. - 07:00p.m.	NSO: Queer Dinner
Sept. 11	06:00p.m. - 07:30p.m.	Project Thrive Mentor Orientation #1
Sept. 12	10:00a.m. - 11:00a.m.	Project Thrive Mentor Orientation #2
Sept. 12	07:00p.m. - 09:00p.m.	BBQueer
Sept. 14		RMCC Annual Block Party
Sept. 18	06:00p.m. - 08:00p.m.	Project Thrive Welcome Reception
Sept. 26	07:00p.m.	Mark Brennan Rosenberg
Oct. 5	10:00p.m. - 12:00p.m.	Internship Success for International Students
Oct. 7-11	07:00p.m.	Coming Out Week Celebration
Oct. 8		Fall Outing (Are You Afraid of the Dark RISD?)
Oct. 18	07:00p.m. - 11:00p.m.	International Monthaversary
Oct. 19	12:00p.m. - 03:00p.m.	Eat the World International Food Fair
Oct. 20	08:30a.m. - 02:00p.m.	Rhode Island Global Soccer Cup
Oct. 30	07:00p.m. - 09:00p.m.	RI Art Archive Symposium
Dec. 2-4		AIDS Memorial Quilt on Display
Dec. 4	07:00p.m. - 08:00p.m.	World AIDS Day Memorial Service
Jan. 15	07:00p.m. - 09:00p.m.	Expose Gallery Show in MLK Celebration / Mentee Work / Show
Jan. 30		Mentoring Ice Skating Outing
Feb. 20		Closing Celebration
Mar. 1	10:00a.m. - 01:00p.m.	Cultural Differences in Hiring International Students
Apr. 19	10:00a.m. - 01:00p.m.	Job Success in the U.S. for International Students
May. 5	12:00p.m. - 01:00p.m.	HOLI Celebration



PARTNERS & PARTNERSHIPS

The following individuals / organizations / departments either co-sponsored ISE programming or ISE partnered with them to co-sponsor their programming during 2013-14



RISD Academic Affairs Office
RISD Alumni Relations
RISD Campus Design + Exhibitions
RISD Career Services
RISD Center for Student Involvement
RISD Community Dinner Society
RISD Dining and Catering Services
RISD Health Services
RISD Human Resources Office
RISD Illustration Department
RISD Liberal Arts – English Department
RISD Liberal Arts – History of Art + Visual Culture
RISD Liberal Arts – History, Philosophy, Social Sciences
RISD Liberal Arts Division
RISD Library
RISD Museum – Prints, Drawings, and Photographs
RISD Office of Residence Life
RISD Office of Student Affairs
RISD Student Development & Counseling Services Office
RISD Student Programming Board
100 Black Women of RI*
Andy Jacques, RISD Service Learning Coordinator
Asian Cultural Association (RISD student organization)
Black Artists And Designers (BAAD) (RISD student organization)
Brown / RISD Hillel
Brown RISD Catholic Community
Elena Calderon Patino, RI State Council on the Arts
Queer Student Alliance (RISD student organization)
RI Black Storytellers (RIBS)*

* Denotes non-RISD individuals

The RISD Office of Intercultural Student Engagement Annual Report 2013-2014

Content: Tony Johnson, Chris Lauth, Max Kaplan, Kate Sacco

Content layout & re-design 2013-2014: Ryne Feng (Furn '16)

Edited by: OISS & ISE

All photos in this publication are provided courtesy of the Office of Intercultural Student Engagement and the Office of International Student Services.

For more information, please contact:

Rhode Island School of Design
Office of Intercultural Student Engagement
Office of International Student Services
2 College Street
Providence, RI02903

Phone: 401-277-4957
Email: diverse@risd.edu



