



INTERNATIONAL STUDENT ENGAGEMENT

Table of Contents

Director's Note3
Mission4
Staff5 - 7
Conferences8
Programs9 - 12
ISE Programming Highlights13 - 15
Project Thrive16 - 17
Parent's Council Fund18
LGBTQ19 - 20
Women's History Month21
Religious Life22 - 24
New Initiatives25
Resources26
Office Collaborations27
Facts and Figures28

Director's Note



Barbara Baker
Director of ISE

This has been an exciting first year at RISD. We continue to strive for programming and services that align with the needs articulated by our students.

As the new director with the Office of Intercultural Student Engagement at RISD, I have utilized this year to hear the voices and concerns of our students and campus community before articulating a strategic vision for the office that will be shared in 2017-2018. It is my hope that vision will build on the rich and engaging history of the ISE office.

We continue to move forward with offering safe spaces to validate social identities, programs that support inclusivity, and creating warm welcoming spaces at Ewing Multicultural Center and Fones Cottage that give our campus community the opportunity to learn about the intersectionality of social identities.

Your support and feedback are always greatly welcomed.

With love and liberation,

Barbara Baker, Ed.D.
Director of ISE

Mission

The office of Intercultural Student Engagement (ISE) promotes cultural awareness, dialogue, and interaction while serving as a hands-on resource for specific RISD communities. Primary target communities include: students of color, international students, students identifying within the Lesbian, Gay, Bisexual, Transgender, Questioning (LGBTQ) spectrum, religious and/or spiritual students; and those dedicated to inclusive community.

This office provides leadership in the areas of student success, retention programs, campus education and immigration compliance. It also works closely with RISD's faculty, staff, and administrators. As a resource, it advises students on social, cultural, and personal matters, financial aid issues, and academic procedures. Student and leadership development through supporting and advising student cultural groups is encouraged and assisted. Included in the ISE office is the Office of International Student Services, which specifically addresses international student success and immigration.

Staff

Professional Staff



Barbara Baker
Director of ISE (new)

Barbara began her life journey's calling to social justice activism in Clarinda, Iowa and Manhattan, Kansas. Poetry was her way to process issues of race, class, and gender in her life growing up in rural America. She is the first in her family to go to college and receive a bachelor's of science in Journalism and Mass Communications and a master of science in Educational Counseling and College Student Personnel from Kansas State University. In addition, she obtained a doctorate of education in Language, Literacy and Culture from the University of Massachusetts-Amherst. The focus of her doctoral work, *Liberating the Body in Body Politics*, was on how women of color utilize personal narrative and theatre to heal from internalized oppression in their lives. Barbara considers herself to have a life calling to social justice and equity concerns due to her lived experiences as a African American-Native American female who comes from a working poor family. She continues to write poetry and plays about lived experiences related to social identities and intersection of social identities. As the Director of Intercultural Student Engagement at RISD, Barbara provides a strategic vision on diversity and inclusion for the ISE office and provides leadership and support to issues pertaining to identity development for students and cultural competency for the RISD campus.



Mary Fernandez

Administrative Coordinator (new)

Mary earned her Bachelor of Science in Business Administration from Johnson & Wales University. Her role in ISE consists of managing administrative tasks and services. As a welcoming face in the main office, Mary is the first point of call for issues, inquiries, and opportunities pertaining to the Office of Intercultural Student Engagement. Mary's native language is Spanish. She was born and raised in the Dominican Republic and has lived in Rhode Island for the past 13 years. Prior to RISD, Mary worked at Jewish Family Services as a Lifeline Installer.



Emma Montague

Assistant Director
of Diversity Programs

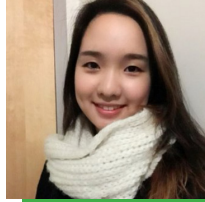
Emma's role in ISE is multifaceted, which includes leading our first generation mentorship program 'Project Thrive', advocating and providing resources for the LGBTQ+ community, and highlighting local resources for our spiritual and religious students.

She is originally from London, England, but has also lived and worked in Illinois, California, Florida, Massachusetts and Rhode Island. Prior to joining our team, Emma worked at the School of the Art Institute of Chicago and is thrilled to be part of the community at RISD and continue to work closely with a community of artists. She earned her Bachelor of Arts Degree in English Literature at Royal Holloway, University of London and a Master's degree in College Student Personnel from The University of Rhode Island.

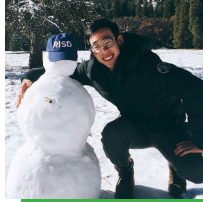
Cultural Programmers



Alla



Angela



Danny



Joe



Emily



Molly



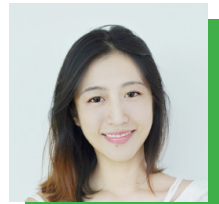
Zak



Lucy



Oswaldo



Leah



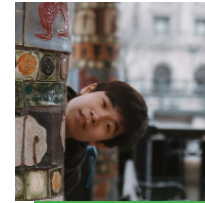
Michelle



Zoe



Yannik

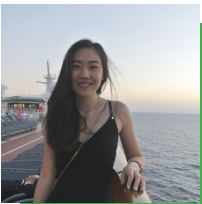


Noah



Daedulus

Graphic Designer



Mim

Conferences

Advocacy Through Feminist Lens (2/26/17)

All In (4/8/17)

Development Day (11/21-22/16)

LGBTQ at Day One (11/3/16)

Lynda Course (11/10/16)

NASPA (11/14-16/16)

NASPA Drive In (4/13/17) One Size Does Not Fit All:

Creating a More Inclusive Campus for Our Students

Sabbatical Presentation (3/1/17)

Team Retreat (12/19/16)

Tech Pro (10/12/16)

Vertical Horizons Show (2/28/17)

(Webinar) Intersections of Interfaith Work and LGBTQ Issues (3/13/17)

(Webinar) Best Practices for Reporting on Mass Shootings (3/30/17)

What Students Really Think About Religious Diversity:

Findings Form IDEALS Confirmation (10/13/16)

Diversity Fellows: 'Training Day' (3/12/17)

Programs

During the 2016-2017 academic year, 1,796 individuals participated in ISE educational and social programming. Below is a comprehensive listing of ISE programming. Some programs were collaboratively produced with other departments on campus.

September

———	Presentation: Inclusive Language Orientation Leaders
9/5	Project Thrive: Meet N Greet
9/14	Project Thrive: Welcome Dinner
9/9	RISD UNITES
9/17	Project Thrive: Retreat
9/21	International Day of Peace Open House
9/21	Project Thrive: Study Group 1-Settling In & Personal Wellbeing
9/24	Project Thrive: Waterfire & Tour
9/28	Presentation: Inclusive Language Residence Advisors
9/30	Hispanic Heritage Month Movie
9/30	EID

October

10/3	Ewing Open House
10/4	Robyn Ochs, Beyond Bisexuality 101
10/5	Project Thrive: Study Group 2- Writing for Others, Writing for You
10/11	Coming Out for Coffee
10/11	BBQueer
10/14	Project Thrive: Mentor Mid-semester Check In Lunch
10/19	Project Thrive: Study Group 3- Dinner & Lecture
10/20	Presentation: Inclusive Language, RIC Women's Center
10/20	Rocky Horror Picture Show, Post-Show Dialogue
10/27	Focus Group: Korean Military

November

11/2	Project Thrive: Study Group 4- Night with the Musuem Inclusive Language - 15 West Community Project
11/7	Share Meeting
11/8	RISD Navigates
11/9	Post Election Discussions and Support
11/10	Title IX &Trans Students' Rights - Webinar
11/13	Hillel Open House
11/16	Project Thrive: Study Group 5- Navigating Work & Still Having a Life
11/17	Alvarez Community - Day of Service
11/18	Transgender Day of Remembrance

December

12/9	Juvie Talk Monologues
12/14	Project Thrive: Winter Warmer
12/15	RISD Diversity Dialogue: "Concerns of Trans People" led by Gina Kamentsky

January

1/11	Project Thrive: Study Group 6-Steps for Success
1/12	ISMS
1/14	MLK Celebration Concery & Community Dinner
1/15	Bi-Brunch
1/16	Day of Service
1/19	Emory Douglas Lunch with Student Artists
1/19	Emory Panel Critique
1/20	MLK Series Keynote Lecture: Emory Douglas
1/25	Project Thrive: Group Ice Skating

February

2/1	Project Thrive: Closing Reception
2/2	Yoga
2/4	Calligraphy, Curry, Convo
2/13	RISD Diversity Dialogue: "Humor and Comedy in Relation to Anti-Racism and Anti-Sexism Work"
2/14	Love = Love, OPENING of Pride Room on Valentine's Day
2/19	Wellness Task Force Panel & Movie
2/22	Service Project
2/24	Black Radical Love
2/24	Moonlight Flim Screening, Black History Month

March

3/5	Envisioning Trans Liberation
3/11	SASA Night
3/11	Purim Brunch
3/12	Brown LGBTQ Legacy
3/16	Jamal Lewis Luncheon
3/16	Coffee Hour with Nicole Buchanan, RISD Alumni
3/16	Dinner with Nicole Buchanan, RISD Alumni
3/18	SASA Synergy
3/19	Brown LGBTQ Legacy Series
3/22	Women's Empowerment Month: Diverse Women's Alumni Panel
3/25	RISE UP

April

4/6	Rebirth Garments, Gender Fluidity Show
4/14	Accepted Students Day
4/14	Taiwanese Night Market
4/17	RISD Leads
4/19	The Price for a Pound of Flesh (lecture)
4/19	Expose RA/AIR Show

May

5/2/17	Conversion Therapy Ban
5/5/17	RAID launch
5/6/17	SASA Show

ISE Programming Highlights

MLK Series

Each academic year, the RISD community and the Office of Intercultural Student Engagement work together to organize and host a series of special events honoring the life and vast contributions made by Martin Luther King, Jr. in creating a more just and democratic society. The annual series includes lectures, programs, and workshops designed to provide RISD and the local community with meaningful moments of service, reflection, self-development, inspiration, and celebration.



Emory Douglas
MLK Keynote + Honoree

As an Artist, Educator, and Human Rights Activist, Emory Douglas is legendary for his use of art as a vehicle of education, empowerment, and resistance. Serving as Minister of Culture for the Black Panther Party between 1967-1980, Douglas is most noted for his political drawings and cartoons in the Black Panther Newspaper. Douglas' artistic and community impacts are vast, including his 21 year tenure as the layout artist and graphic designer for the San Francisco-based Sun Reporter Publishing Company. In 2007, a collection of his work was compiled in the edited book, *Black Panther: The Revolutionary Art of Emory Douglas*.

Diversity Fellows

As part of the President's initiative concerning diversity, equity, and inclusion, three artists-in-residence were announced as diversity fellows for 2016-2017.

Rene Payne is working on design projects related to diversity, equity, and inclusion, including the MLK Series and the RISDiversity Project. Marc Boucai and Reya Sehgal offered performance workshops (in collaboration with the MLK Series) to students, faculty, and staff, as well as conducted a performance ethnography on diversity, equity, and inclusion at RISD.



West Broadway Middle School Day of Service



In honor of Black History Month, Intercultural Student Engagement was asked to participate in a day of celebration and learning at the local West Broadway Middle School. Emma, Mary, and a couple of our cultural programmers joined Mrs Brown at the school to provide arts, crafts, and access to RISD resources such as the Young Artist Program. They were able to meet and greet with over 300 of the students at the school, teaching them about the work that RISD is committed to as well as how diversity education is a life-long lesson. ISE is looking forward to future collaborations with the school.

Project Thrive

Programs

Mentor Orientation Lunch

Meet N' Greet – Meet your fellow peers in the program as well as the ISE mentoring program staff

Welcome Dinner - Meet your mentor officially for the first time

Project Thrive Retreat - Welcome Lunch + Presentation

Study Group 1: Settling in + Personal Wellbeing + Reflection Room

Waterfire Tour - Meet in the auditorium lobby and explore waterfire

Study Group 2: Write it Right

Mentor Mid-Semester Check-In Lunch

Study Group 3: Connecting to Brown University Resources

Study Group 4: Night with the Museum

Study Group 5: Navigating Work and Still Having a Life

Winter Warmer: Mentors + Mentees

Study Group 6: Steps For Success: A Presentation by Career Services

Group Ice-Skating

Closing Celebration Dinner

Mentors

Josh Peipock

Julie Talbutt

Kim Almeida

Jan Howard

Nicole da Cruz

Charity McNabb

Ned Draper

Susan Andersen

Michelle Zhuang

Patricia Barbeito

Chantal Feitosa

Karen Harris

Deb Clemons

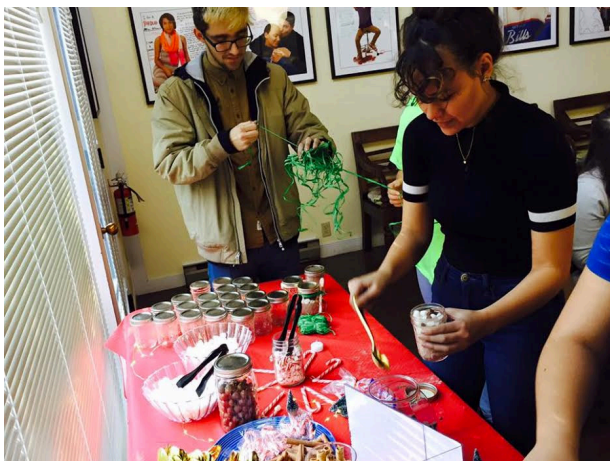
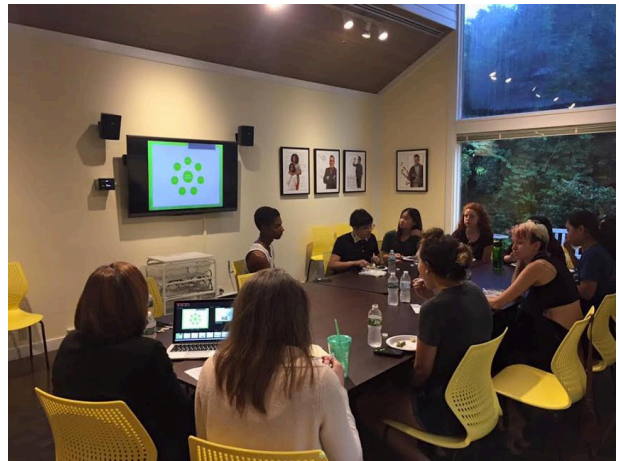
Glnnie Dunleavy

Claire Richey

Cassie Bower

Ashley Montague

Kyle Stuber



Parent's Council Fund

Due to the generous donation of funding from RISD's Parent's Council, Emma has been able to expand the range of programming and opportunities available to Class V of Project Thrive.

The Mountain Top, Melody Chang (PTIV)

"I had a great time, and I thought it was a really intense and engrossing experience. Super cool!"

Gina Borrromeo, Curator of Ancient Art, RISD Museum (Mentor 2011-2016)

"Thank you for giving me the opportunity to attend last night's performance of 'The Mountaintop'. I went with Glory, my Thrive mentee from a year ago. I was so glad that Glory and I were able to go together. The play is powerful and Joe Wilson, Jr's and Mia Ellis's performances were completely riveting. It was Glory's first time at Trinity Rep and I can't think of a better way to be introduced to that theater. The mix of sassy humor and sadness and the intimate look at the human side of both Martin Luther King and Camae made a lasting impression on me. The play gives me hope right now, in this moment, when I need it. I'm looking forward to talking to Glory about the play when I next see her. We always have great conversations. I'm grateful to Project Thrive for experiences like this and for the rich relationships I've formed with Glory and Janice. They help keep me young and hopeful for the future."

Jan Howard, Chief Curator, RISD Museum (Mentor 2016-2017)

"I'm very grateful to you for getting us tickets to that wonderful performance. It was a lovely opportunity to see the students and mentors and to get to know them better. I look forward to the chance to talk further about the play the next time I see everyone."

LGBTQ+

This year Emma was given the unique opportunity of overseeing Fones Cottage. With a growing LGBTQ+ population at RISD, it was important to her to open a community PRIDE lounge to honor and celebrate out LGBTQ+ community as well as provide resources to educate others. Emma set up a comfortable lounge, full of books, films, and other resources, with great success and over 1,000 visitors in its inaugural year. Along with opening this space, here are some of the programmatic offerings from our Assistant Director and Cultural Programmers.

BBQueer

Bi Brunch

Robyn Ochs

Rebirth Garments

Gender Fluidity Show

Cuatro Lunas

Moonlight Film Screening

Trans 'I'll Go With You' Initiative

Trans Clothing Drive / YPI

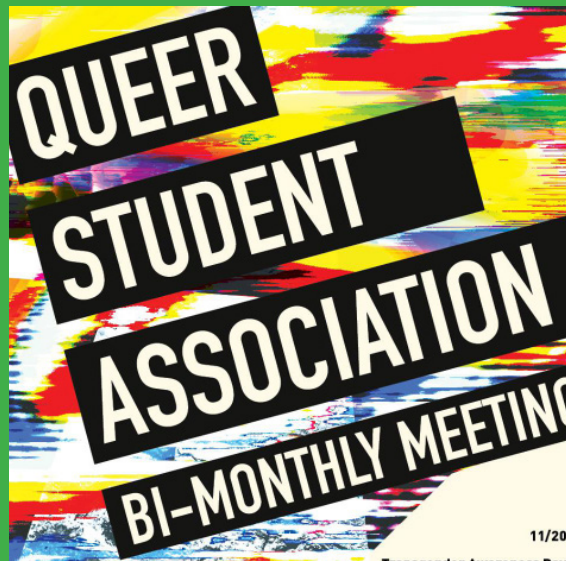
Opening of Pride Room at Fones Cottage



Coming out for Coffee



Transgender Day of Remembrance



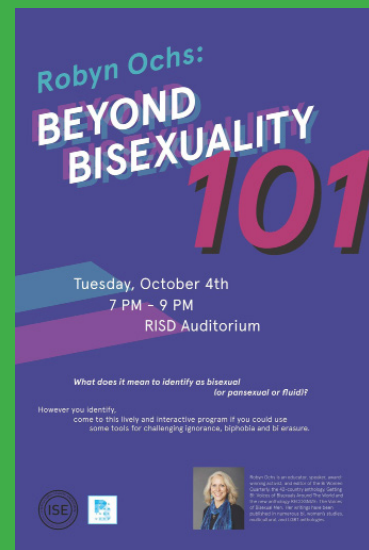
Queer Student Association (QSA)



BBQueer



Moonlight



Robyn Ochs

Religious Life

Another critical community that found a home in Fones Cottage, a.k.a. “The Peace Center”, was our spiritual and religious groups. Emma was able to work with facilities to move the reflection room from Ewing to Fones, doubling its size and offering a new peaceful space at the top of campus. We have had over 1,500 visitors to Fones in its first year.

Opening of New Reflection Room

Connection to Local Places of Worship

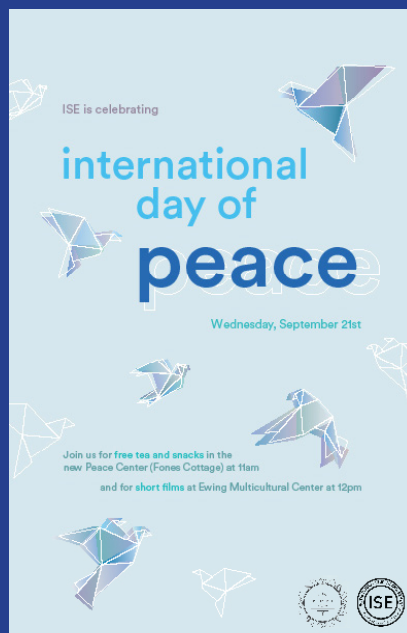
Map of Local Places of Worship

World Religion Day

Empowerment Yoga

EID and Ramadan Observance

Purim Brunch



International Day of Peace



Map of Local Places of Worship



Reflection Room

Meditation

with RA's Alla and Molly

Sunday, July 9th

Meet outside of East Hall @ 2 PM

(we will walk together to the Peace Center, across Nick Green)

Let's relax, have some tea, and take a moment to breathe.

A simple line drawing of two hands cupped together, holding a small cup of tea. The drawing is done in a sketchy, hand-drawn style.

Meditation



Fones Cottage a.k.a. The Peace Center



Gender inclusive bathrooms:
First Floor - across from kitchen
Second Floor - to the left as you enter the upstairs

RISD Flips

RISD YARD SALE

JUNE 28TH | 10AM to 3PM
MARKET SQUARE ON NORTH MAIN

Come grab gently used clothes, shoes, trinkets, and more at amazing prices! All proceeds go to RISD student need based scholarships.

Rosie food truck will be available.
Rosie will be donating all \$\$ to the scholarship fund.

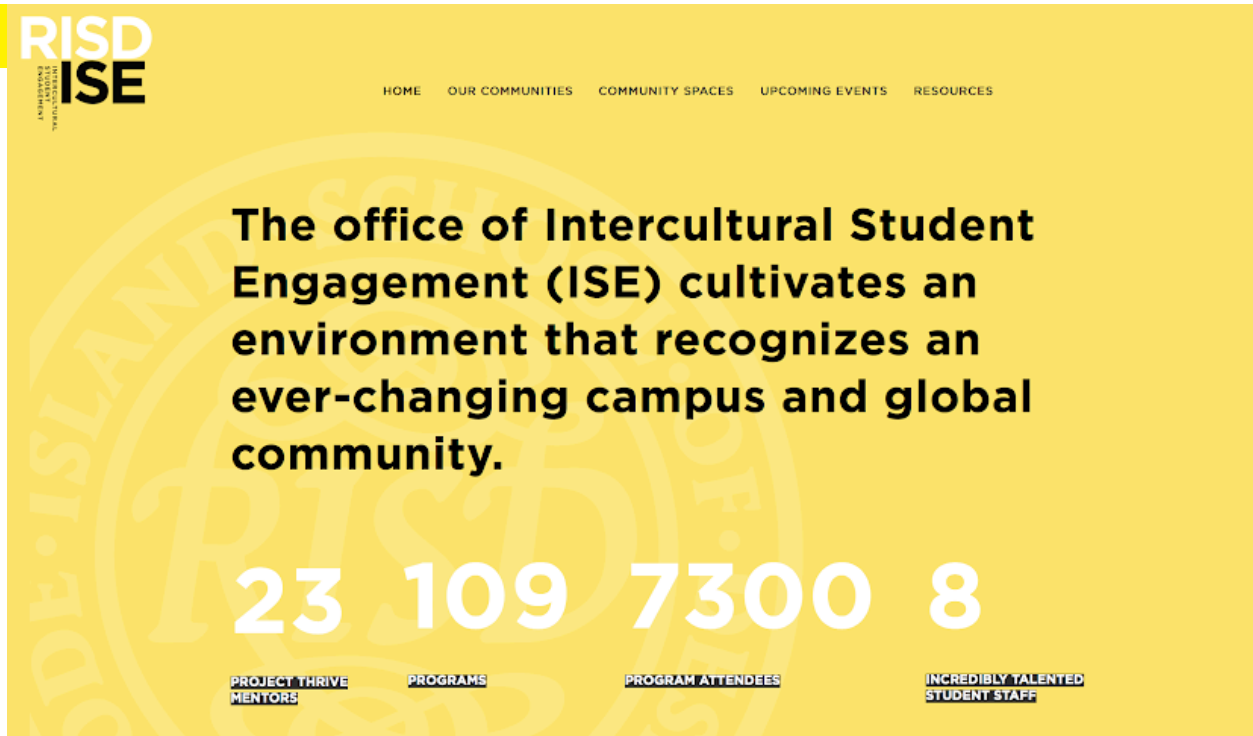
RISD FLIPS
Scholarship Fund

Every year at move out, an incredible volume of unwanted items are discarded. Dumpsters both inside and outside of residence halls are filled to the brim. In the past, RISD has coordinated clothing drives and Second Life art supply collections, both of which have resulted in large charitable donations.

This program raised \$7,000 just in the past year, and raised \$14,000 over the past two years.



Resources

A yellow banner for the RISD ISE website. In the top left corner is the RISD ISE logo. A navigation bar at the top contains links: HOME, OUR COMMUNITIES, COMMUNITY SPACES, UPCOMING EVENTS, and RESOURCES. The main text reads: "The office of Intercultural Student Engagement (ISE) cultivates an environment that recognizes an ever-changing campus and global community." Below this, four large white numbers are displayed: 23, 109, 7300, and 8. Under each number is a label: "PROJECT THRIVE MENTORS", "PROGRAMS", "PROGRAM ATTENDEES", and "INCREDIBLY TALENTED STUDENT STAFF" respectively. A faint RISD seal is visible in the background.

RISD ISE

HOME OUR COMMUNITIES COMMUNITY SPACES UPCOMING EVENTS RESOURCES

The office of Intercultural Student Engagement (ISE) cultivates an environment that recognizes an ever-changing campus and global community.

23 109 7300 8

PROJECT THRIVE MENTORS **PROGRAMS** **PROGRAM ATTENDEES** **INCREDIBLY TALENTED STUDENT STAFF**

ISE website: ise.risd.edu



Ewing Multicultural Center/Resource Center

Office Collaborations

Our Campus Partners

Residence Life

Wellness Task Force

Center for Student Involvement (CSI)

Counseling & Psychological Services (CAPS)

Health Services (HS)

RISD Dining + Catering Services

Facilities Management

MLK Committee

Favor Design and Communication

Special Thanks to ...

Photographer - David O'Connor

Editors: Noah Jung, Industrial Design '19
Cassandra Servis, Illustration '21

Facts & Figures

Ewing Reservations

Total Reservations: 372
Staff/Faculty Reservations: 168
Student Reservations: 204

Programs

87

Attendees

1796

Project Thrive Programs

14

Student Staff

16

Visitors to Fones Cottage

1500





Ewing Multicultural Center
41 Waterman Street
ISE.RISD.EDU
(401)-277-4908
ise@risd.edu