



SPCC Plan – Rhode Island School of Design

What is an SPCC Plan?

- RISD's SPCC or a Spill Prevention Control & Countermeasure plan is written to ensure that we have policies and procedures in place to minimize the potential for oil spills. The plan includes inspection procedures for many of the oil storage areas on campus, and the response RISD personnel would take to mitigate any releases of oil. **If you ever notice any problems related to oil use or storage at RISD, please call the EH&S department at 401-454-6780 and after hours 24/7 at RISD Public Safety at 401-454-6376.**



Where is the regulation?

- The regulations are written into the Clean Water Act (CWA) by the EPA and were first published in December of 1973 and amended several times with the most recent changes made in 2011.

Who must have a plan?

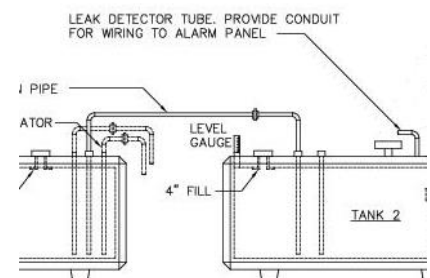
The EPA Clean Water Act regulations state that facilities must have a **certified** SPCC plan if they exceed the following limits:

- 42,000 gallons of oil in underground tanks or greater than 1,320 gallons aboveground

Rhode Island regulations are primarily the same although slightly stricter in some areas.

What are some of the requirements under the plan?

- A facility diagram, which includes the location and contents (type of oil) of every oil storage container, and the amount of oil in each container
- Current drawings of storage tanks, piping and conveyances of oil
- A description of on-site emergency spill response and cleanup equipment
- A description of off-site spill response and cleanup equipment (emergency response contractor(s))
- List of facility emergency contacts in the event of a spill or release
- Training sessions



Rhode Island School of Design's Spill Prevention Countermeasure and Control Plan (SPCC) was first finalized in November of 1999 and most recently re-certified for the fourth time in the summer of 2021. The certification is valid for a period of five years unless our facilities change in a way that would impact the effectiveness of the plan.