



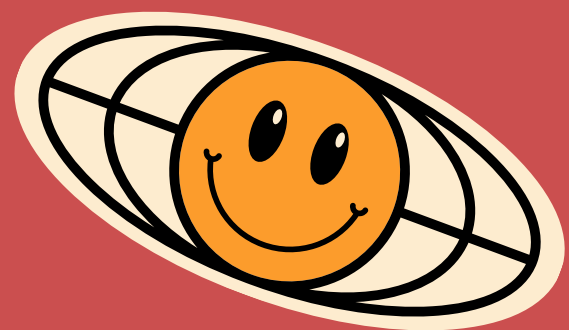
Get Involved!!



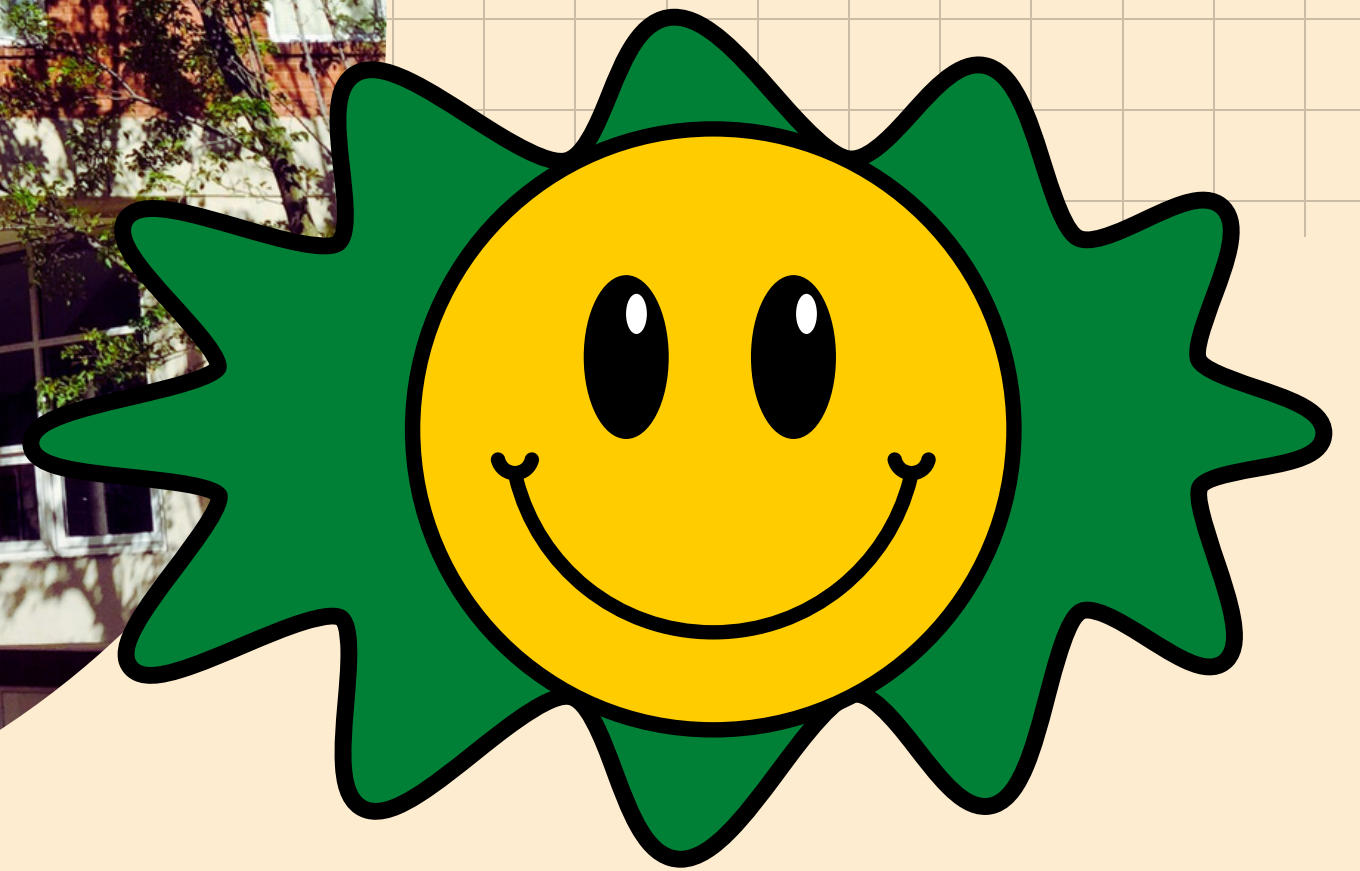
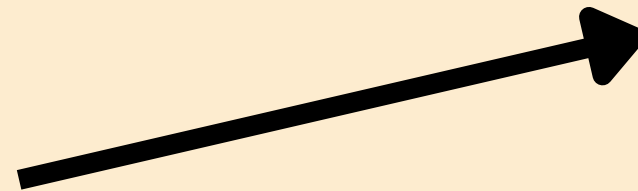
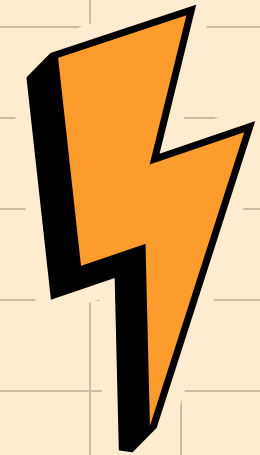
Residence Life

Center for Student Involvement

Intercultural Student Engagement



Residence Life



CC Brendan (he/him)
AD Jasmine (she/her)

Residence Life Staff

RAS

Resident Advisors

- Student staff that live in the community
- Support various student needs, formally and informally
- Programming for floor

AIRs

Advocates for Inclusion in Residence

- Student staff that live in the community
- Social justice peer educators
- Build community through inclusion

CCs

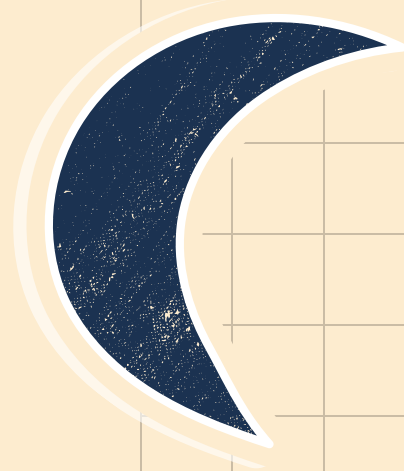
Community Coordinators

- Professional staff that live in the community
- Oversee the building communities
- 4 in total (1 per area)

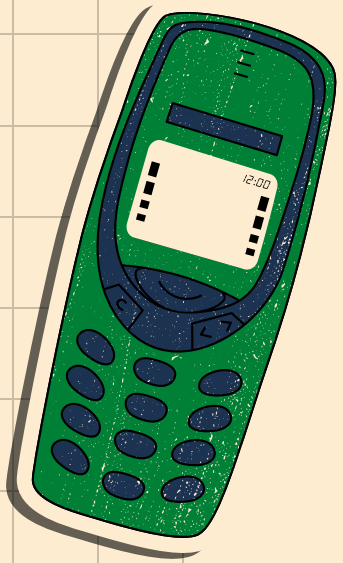
RLO

Other Residence Life Office Staff

- 1 Director
- 2 Associate Directors
- 1 Assistant Director
- 1 Communication Coordinator



Overview of the Residential Experience



Peer Support

- It is all about helping each other
- Share kindness and patience with others
- Open minds are powerful
- RAs, AIRs other student leaders

Community Building & Events

- Programs held by RAs and AIRs directly within the community
- Engaging in these opportunities helps you to meet others and create a sense of belonging for yourself

Community Safety

- College Hill is generally very safe, but RISD is still a city campus
- Access and IDs
- Blue Lights, AEDs, LiveSafe App, RISDRides
- Clery Report

Fall 2023 Kickoff Events RISD Launch

Weekly RA Floor Programs

Foundation Year Kick Off

Meet Your Major

Time Management Workshops

Social Justice & Equity Conversations

Wintercession Wednesdays

Foundations Send Off

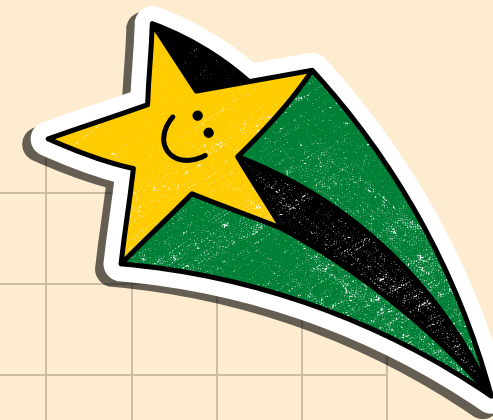


**Event info will be
updated on RISD
Involved!**

Contact Us!



**We are located in
the FYA Quad at
30 Waterman St.**



Email:

housing@risd.edu

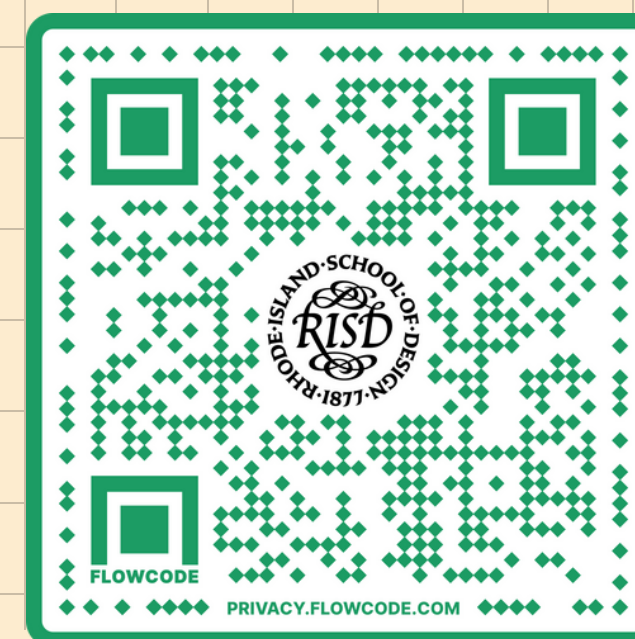
Insta:

@RISDreslife

Phone:

401-454-6650

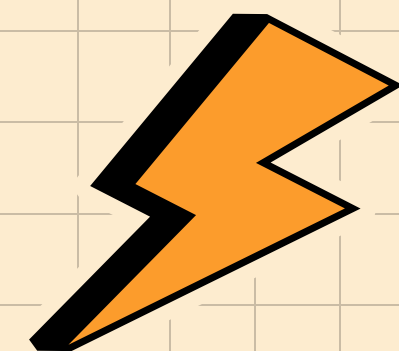
Website:



Center for Student Involvement



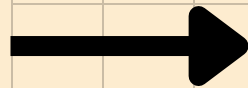
CJ Crossett (she/her)
Becky Cole (she/her)
Sarah Knarr (she/her)
Brenda Pacheco (she/her)



Center for Student Involvement



210 Benefit Street



Carr Haus Cafe

CSI

Health & Wellness

Disability Support Services

International Student & Scholar Affairs

Student Conduct

CARE Team

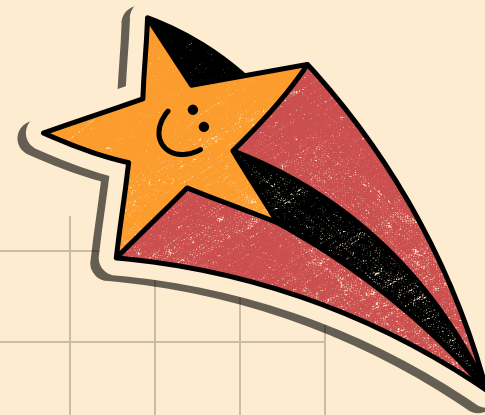
Student Affairs



What We Do!



The easiest way to think of what CSI does is: what do students do outside of the classroom?



Orientation

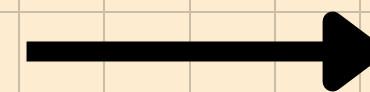
Student Organizations

Large Scale Social Programs

Community Service

Leadership Roles

Fitness & Athletics





6/28

Summer EFS Transfer Student Orientation

**community building, campus
tours, laser-cutting tutorial, risd
museum time, providence hot
spot tours!**

Orientation

8/31 - 9/2

International Student Orientation

**community building, yard sale,
shopping shuttles,
informational sessions with
International Student & Scholar
Affairs, and evening social
programs with
Orientation Leaders!**



9/3 - 9/5

New Student Orientation

**community building, resource
and supply fairs, academic
convocation, tours, community
service, workshops, and evening
social programs with
Orientation Leaders!**

WELCOME.RISD.EDU



Student Organizations



Identity

- Korean Student Association
- Japanese Student Association
- Students for Justice in Palestine
- Chinese Student and Scholar Association
- Black Artists & Designers
- Mango Street Club
- Made in Taiwan

Hobby

- Photo Society
- Sound Club
- Puppet Club
- Book Club
- Architecture for Everyone
- Concept Art Club
- Tink Knit

Athletic

- Figure Skating
- Midnight Soccer
- Basketball
- Surf Club
- Volleyball
- Ski/Snowboard
- Skate
- Rock Climbing

Events

LARGE SCALE

Artist Ball
Grad Week
RISD Create

EDUCATIONAL

Better World by Design
Sex Bingo
Night at the Museum
Open Studios

SUPPORTIVE

Semester Kick-Off tabling
Care Week

CHECK OUT INVOLVED.RISD.EDU FOR ALL EVENTS ON CAMPUS!!



Alternative Spring Break

During Spring Break, CSI and student Trip Leaders organize a trip to support an organization through service for the week.

This is a free trip for students and is application-based!

Trip Leader apps open in fall and Spring Break apps open in December!

Service Experience

Service Saturdays & MLK Week of Service

To support service and volunteer efforts year-round, CSI and LACE fellows work together to bring monthly service experiences with local partners and organizations



LACE Fellowship

Leadership and Community Engagement fellowship opens applications this fall! A small cohort of fellows work externally with community partners or internally with CSI's Service Saturday / MLK Week

Leadership Opportunities



CAB

Campus Activities Board

Students who support CSI's large scale programming through planning, logistics, and staffing

OL'S

Orientation Leaders

The first students to support and meet you on campus! We start our hiring process in December and, if selected, training begins 2 weeks before the start of school

ALLIANCE

Student Government

An executive board and department reps who are the voice of the student body. Elections take place in the Spring!

Student Fitness Center

Catanzaro Student Fitness Center

Centrally located by the first-year residential area, the SFC includes a weight/ cardio room, dedicated stretching areas, and two studio spaces. It is accessible to all students and open seven days a week while classes are in session.

Fitness Classes

The SFC offers several fitness classes each week. These are free to all students and include yoga and strengths based classes.

Leadership Opportunities

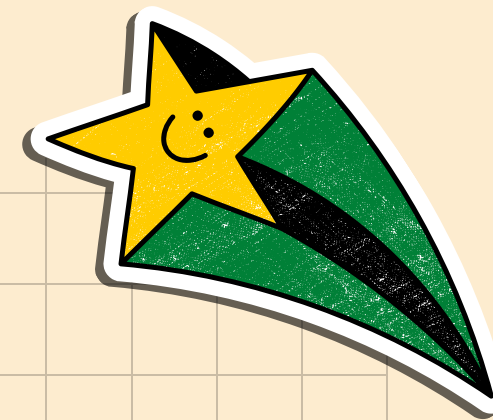
The SFC is a student-run space and there are opportunities to work as a monitor, manager, or content creator.

Contact Us!



**We are located
on the 2nd floor
of Carr Haus**

210 Benefit Street



Email:

csi@risd.edu

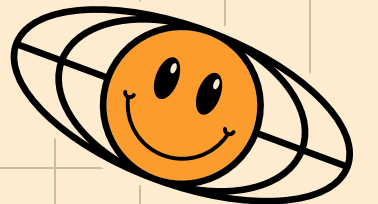
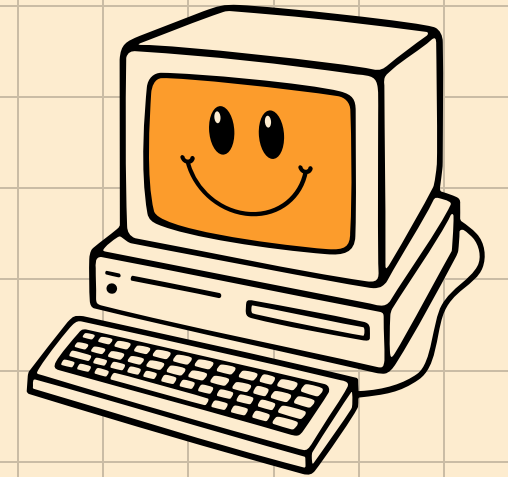
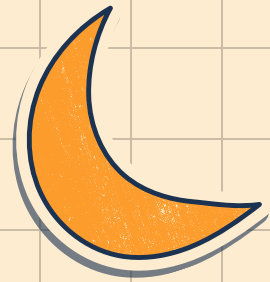
Instagram:

risd_csi

Get Logged into Involved!



Intercultural Student Engagement

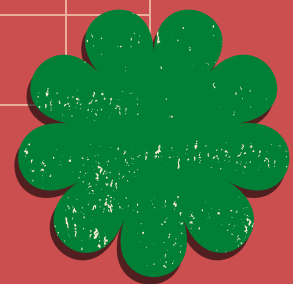


Ewing Multicultural Center
41 Waterman Street, Providence, RI

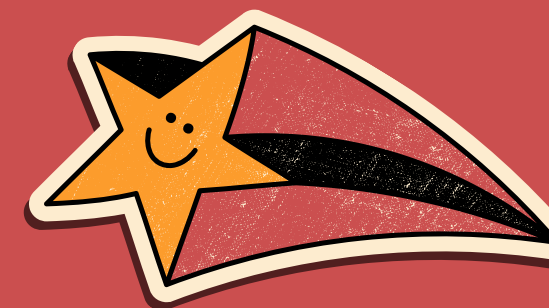
Student Support

Project Thrive

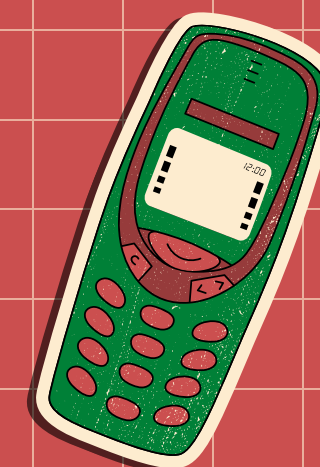
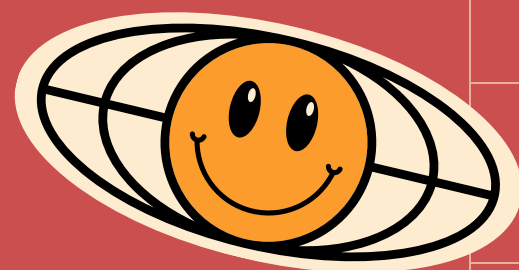
Safe Spaces



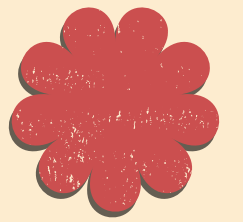
ISE



Overview



Peace



Mission

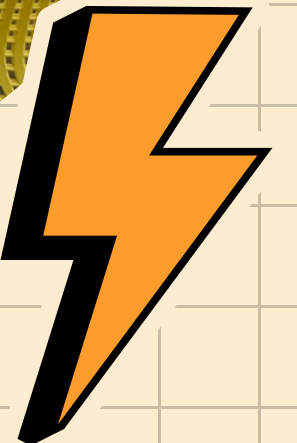
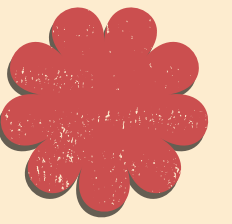
ISE nurtures the holistic growth and inspiration of emergent artists and designers to enhance social consciousness, cultural mindfulness, self-actualization, and inclusive dialogues.

We support students from underrepresented backgrounds and marginalized groups.

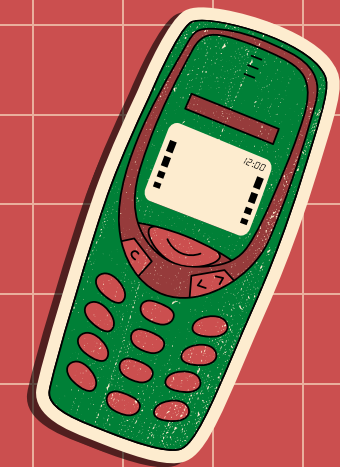
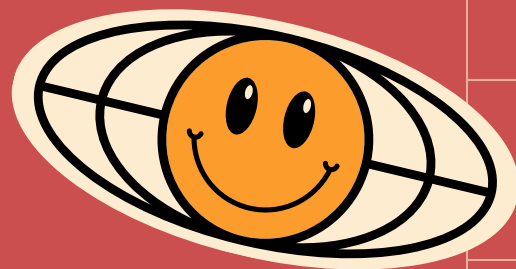
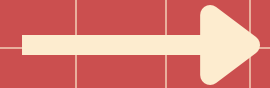
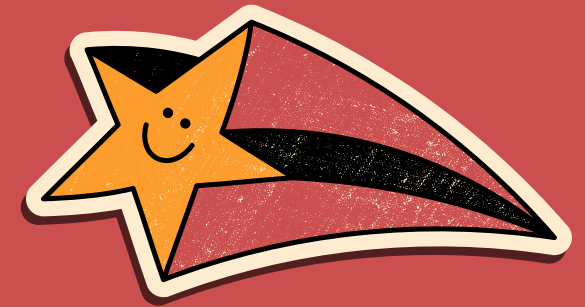
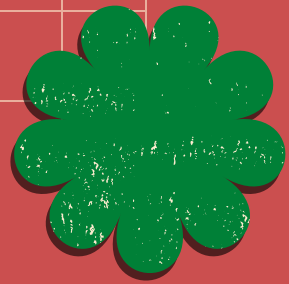


Communal Spaces

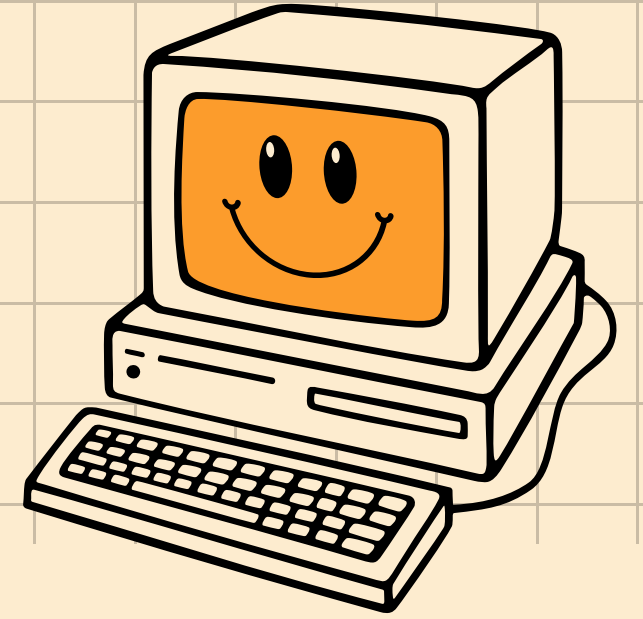
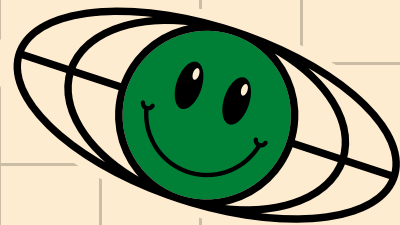
- **Ewing Multicultural Center Lounge**
- **Pride Room (Homer Hall)**
- **Reflection Rooms (Homer Hall and 15 West)**



Project Thrive

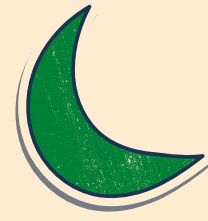


Project Thrive

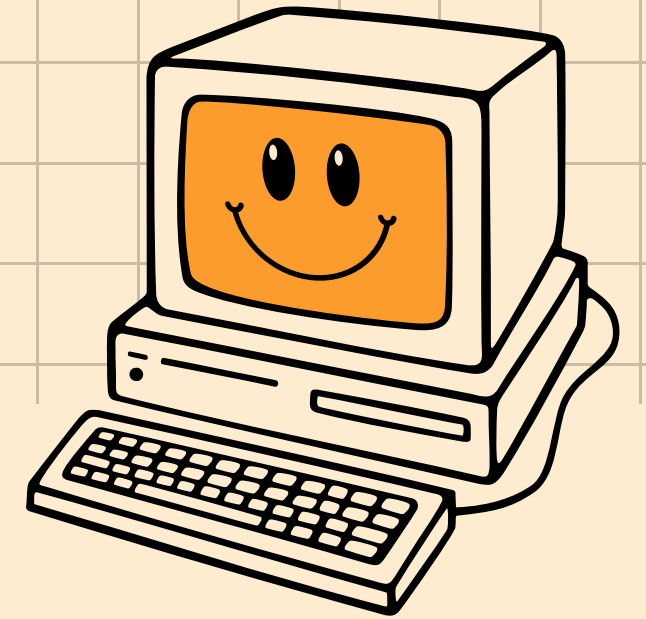
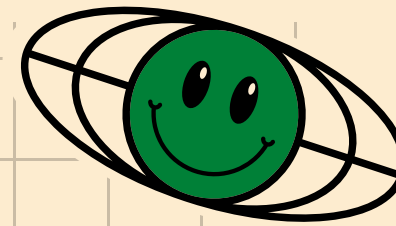


Project Thrive provides first generation students with opportunities to reflect on their identities and embrace the strengths and assets they hold as first-generation college students.

Programming

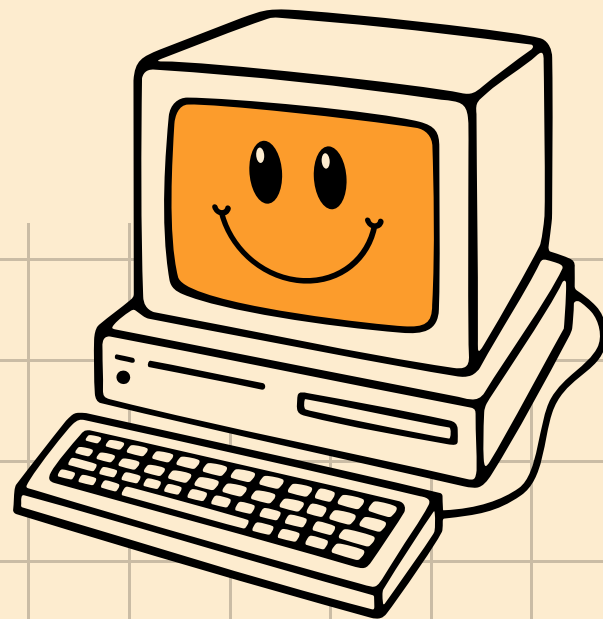
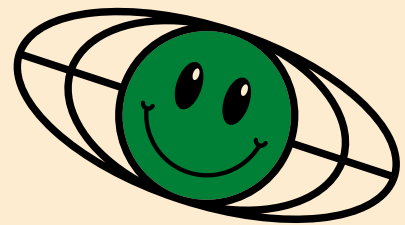


Project Thrive students meet weekly with RISD faculty, staff, and alumni to engage in developmental sessions to help ensure a positive first-year experience and create a foundation for success.



Sophomore, Junior, and Senior students meet regularly for sessions on maximizing their time at RISD through high-impact experiences. They also support the transition of our first-year cohort.

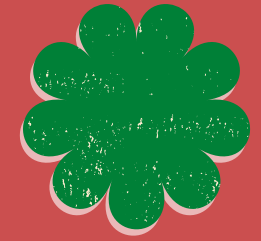
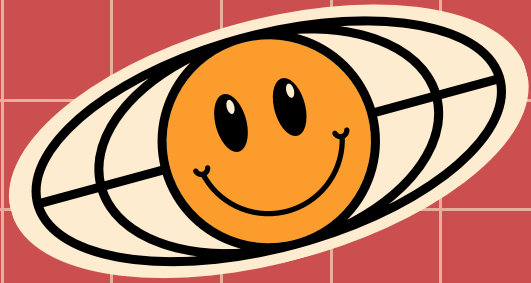
Project Thrive



**Project
Thrive**

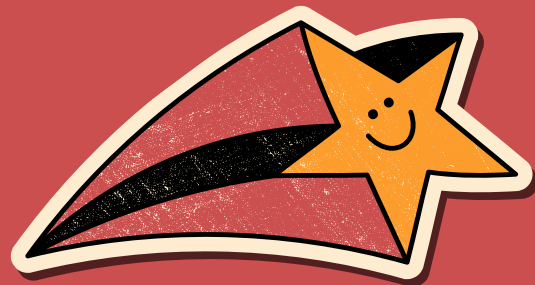
Mentoring

- Critical component of Project Thrive
- Each student gets a faculty or staff mentor
- Student Leaders who worked with FGC POP are invited to become Thrive Peer Mentors for the first-year Thrivers
- Two junior or senior Thrivers serve as Peer Mentors and Leaders for the Sophomore + group.



A.E?.

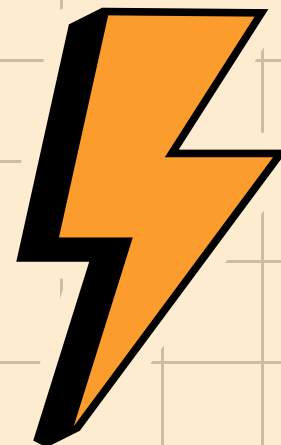
Programming



Programming Overview



- LGBTQ+
- Race/Ethnicity
- International
- Spirituality/Religion
- Gender
- Socioeconomic Status
- And more!



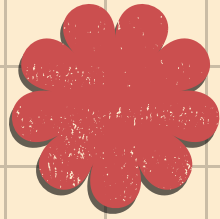
EWING PATIO
OCT. 20 | 6:30 - 8:30pm



**RVSP
ON
INVOLVED**



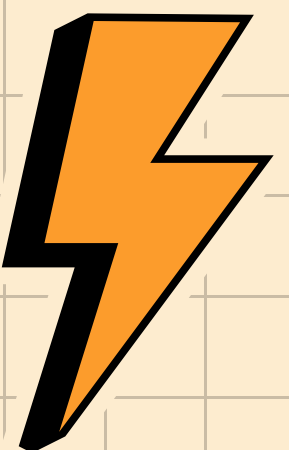
The poster features a pink background. At the top, the text "EWING PATIO" is in purple, and "OCT. 20 | 6:30 - 8:30pm" is in black. In the center, there is a logo of a black fork with a curved top that says "BBQQUEER" in blue and green letters, with three wavy lines above it representing smoke. To the right of the logo is a QR code. Below the QR code, the text "RVSP ON INVOLVED" is in black. At the bottom, there is a row of seven stylized, colorful faces of diverse people.



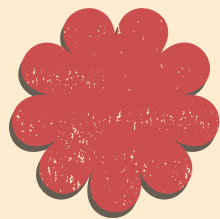
Cultural Programmers

Cultural Programmers work with the Office of Intercultural Student Engagement (ISE) to coordinate cultural, social, educational, and artistic programming for the campus.

They serve as student leaders by planning events which emphasize cultural awareness and inclusion.

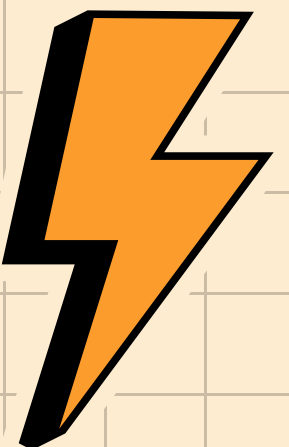


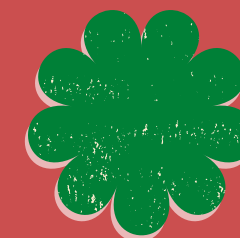
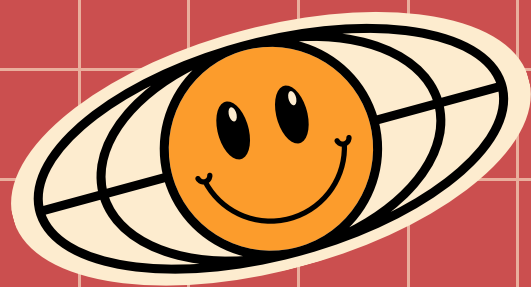
Cultural Programmers



Duties

- Manage the ISE website and social media accounts.
- Oversee Pride and Reflection Rooms in RISD residence halls.
- Track and update Ewing Multicultural Center lounge reservations.
- Advertise and promote events via social media, newsletters, email lists, and flyers.

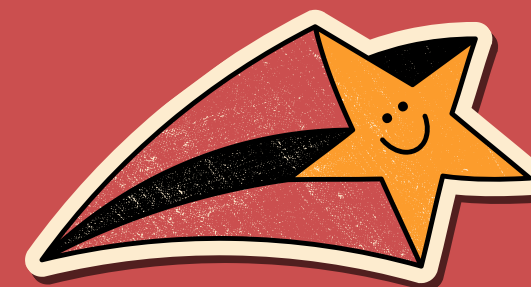




ISE Contact Information

ise@risd.edu

www.ise.risd.edu



Q & A Time!

